

VERIZON WIRELESS

RCYC SHANKS GULCH NEW BUILD

PROJECT INFORMATION

SITE NAME: RCYC SHANKS GULCH
 SITE ADDRESS: WEST HWY 44
 RAPID CITY, SD 57702
 COUNTY: PENNINGTON
 LATITUDE: N44° 03' 15.08" (NAD83)
 LONGITUDE: W103° 21' 20.31" (NAD83)
 DRAWING BASED ON
 SITE DATA FORM DATED: 10-17-14
 OCCUPANCY: B
 BUILDING TYPE: V-B
 SITE AREA: 75' X 75' = 5625 S.F.
 ROOF LOAD: LIVELOAD = 105 PSF

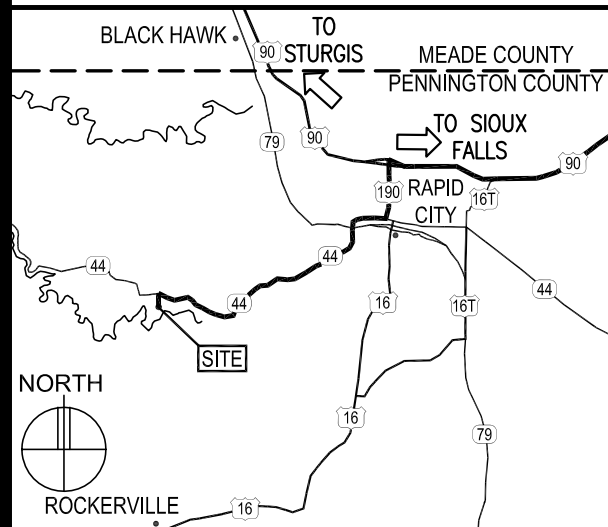
ISSUE SUMMARY

REV.	DESCRIPTION	SHEET OR DETAIL
A	ISSUED FOR REVIEW 10-30-14	ALL

SHEET INDEX

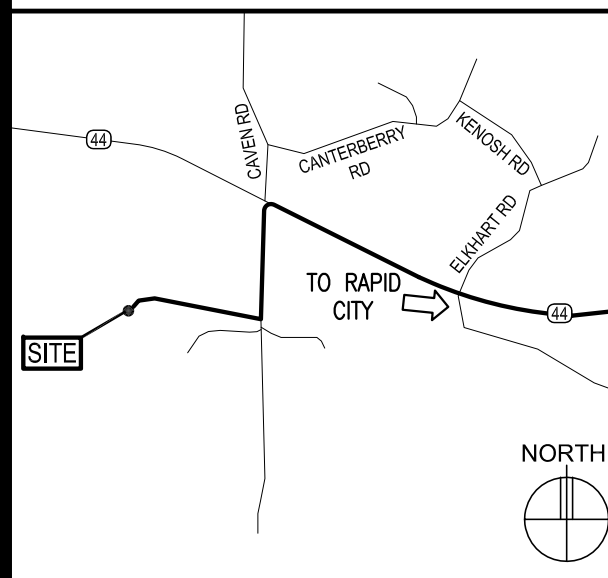
SHEET	SHEET DESCRIPTION
T-1	PROJECT INFORMATION, TOWER ELEVATION, AND SHEET INDEX
A-1	SITE PLAN, STANDARD DETAIL CHECKLIST
A-2	ENLARGED SITE PLAN
A-3	ANTENNA AND COAX KEY, CABLE BRIDGE PLAN, NOTES
A-4	OUTLINE SPECIFICATIONS
G-1	GROUNDING SPECIFICATIONS
G-2	GROUNDING PLAN AND DETAILS
U-1	SITE UTILITY PLAN, FIBER HAND HOLE PLAN
	SURVEY

AREA MAP



DIRECTIONS FROM SIOUX FALLS SWITCH:
 GO NORTH ON 8TH AVE TO I-90 WEST. GO WEST 340 MILES TO RAPID CITY GO TO I-90 SOUTH RAMP (EXIT 57) HWY 190 SOUTH INTO RAPID CITY. TAKE OMAHA ST SOUTH TO MAIN STREET. TAKE RIGHT ON MAIN STREET TO JACKSON BLVD/HWY 44 TO CAVERN ROAD. TAKE LEFT ONTO CAVERN ROAD. SITE ACCESS WILL BE ON THE RIGHT

VICINITY MAP



VERIZON WIRELESS DEPARTMENTAL APPROVALS

	NAME	DATE
RF ENGINEER		
OPERATIONS MANAGER		
CONSTRUCTION ENGINEER		

LESSOR / LICENSOR APPROVAL

SIGNATURE	PRINTED NAME	DATE

LESSOR / LICENSOR: PLEASE CHECK THE APPROPRIATE BOX BELOW
 NO CHANGES. CHANGES NEEDED. SEE COMMENTS.

CONTACTS

LESSOR / LICENSOR: JOSEPH L. THEBERGE
 8105 W. HIGHWAY 44
 RAPID CITY, SD 57702
 (605)341-6724

LESSEE: VERIZON WIRELESS
 10801 BUSH LAKE ROAD
 BLOOMINGTON, MN 55438
 MIKE COGAR (612) 720-0030

POWER UTILITY COMPANY CONTACT: BLACK HILLS POWER
 625 NINTH STREET
 RAPID CITY, SD 57701
 LOUIE SCHWENGLER: (605) 721-1443

TELCO UTILITY COMPANY CONTACT: T.B.D.

ARCHITECT: DESIGN 1 OF EDEN PRAIRIE, LLC.
 9973 VALLEY VIEW ROAD
 EDEN PRAIRIE, MN 55344
 (952) 903-9299

SURVEYOR: FISK LAND SURVEYING
 1022 MAIN STREET
 RAPID CITY, SD 57709
 (605) 348-1538

STRUCTURAL ENGINEER: N/A

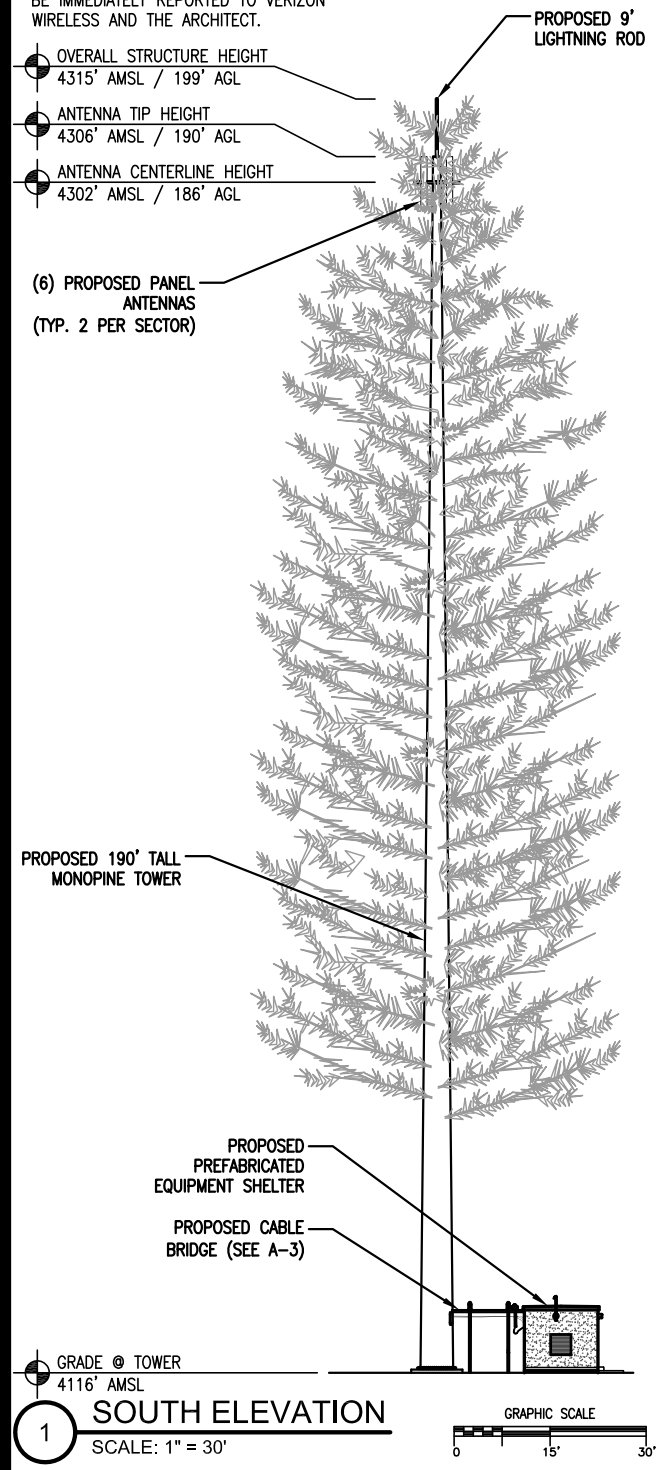
GEOTECHNICAL ENGINEER: T.B.D.

TOWER ELEVATION

NOTE:
 1.) TOWER TO BE ERECTED AND INSTALLED IN ACCORDANCE WITH TOWER MANUFACTURER'S DRAWINGS NOT INCLUDED WITH THIS PACKAGE. DISCREPANCIES BETWEEN TOWER DRAWINGS AND ARCHITECTURAL DRAWINGS TO BE REPORTED TO VERIZON WIRELESS AND THE ARCHITECT IMMEDIATELY.

2.) TOWER FOUNDATION, SHELTER FOUNDATION AND THE ACCESS DRIVE TO BE EXCAVATED AND CONSTRUCTED IN ACCORDANCE WITH RECOMMENDATIONS AND SPECIFICATIONS OF THE GEOTECHNICAL REPORT WHICH IS NOT INCLUDED IN THIS PACKAGE. DISCREPANCIES BETWEEN THE REPORT AND THE OTHER DOCUMENTS TO BE IMMEDIATELY REPORTED TO VERIZON WIRELESS AND THE ARCHITECT.

3.) CONTRACTOR TO ENSURE TIP OF ANTENNAS DO NOT EXCEED TOWER HEIGHT.



GRADE @ TOWER
 4116' AMSL
SOUTH ELEVATION
 SCALE: 1" = 30'

NOT FOR CONSTRUCTION

DESIGN 1

ROBERT J DAVIS, AIA
 ARCHITECT
 9973 VALLEY VIEW RD.
 EDEN PRAIRIE, MN 55344
 (952) 903-9299

VERIZON WIRELESS

10801 BUSH LAKE ROAD
 BLOOMINGTON, MN 55438
 (612) 720-0030

PROJECT
 2007247434

RCYC
 SHANKS GULCH

WEST HWY 44
 RAPID CITY, SD 57702

SHEET CONTENTS:
 CONTACTS
 ISSUE SUMMARY
 SHEET INDEX
 DEPARTMENTAL APPROVALS
 LESSOR APPROVAL
 PROJECT INFORMATION
 AREA & VICINITY MAPS
 GENERAL NOTES

DRAWN BY: E.J.
 DATE: 10-27-14
 CHECKED BY: CDB
 REV. A 10-31-14

T-1

GENERATOR TYPE:
DIESEL

FROST DEPTH
DESIGN = 4'-0"

DETAIL INDEX

DETAIL	DETAIL DESCRIPTION
SHELTER	PREFABRICATED EQUIPMENT SHELTER Vz12.20-4C-xx
1.1	BOLLARD DETAIL
2.1	FENCE DETAIL
3.1	CABLE BRIDGE DETAIL
4.1	CABLE BRIDGE ELEVATION
5.1	ROAD SECTION
6.1	GATE DETAIL
7.1	GPS MOUNTING DETAIL
8.1	TELCO ENTRY DETAIL
9.1	CMPH DETAIL
10.1	ONE-LINE ELECTRICAL RISER DIAGRAM

NOT FOR
CONSTRUCTION

DESIGN 1

ROBERT J DAVIS, AIA
ARCHITECT
9973 VALLEY VIEW RD.
EDEN PRAIRIE, MN 55344
(952) 903-9299

**VERIZON
WIRELESS**

10801 BUSH LAKE ROAD
BLOOMINGTON, MN 55438
(612) 720-0030

PROJECT
2007247434

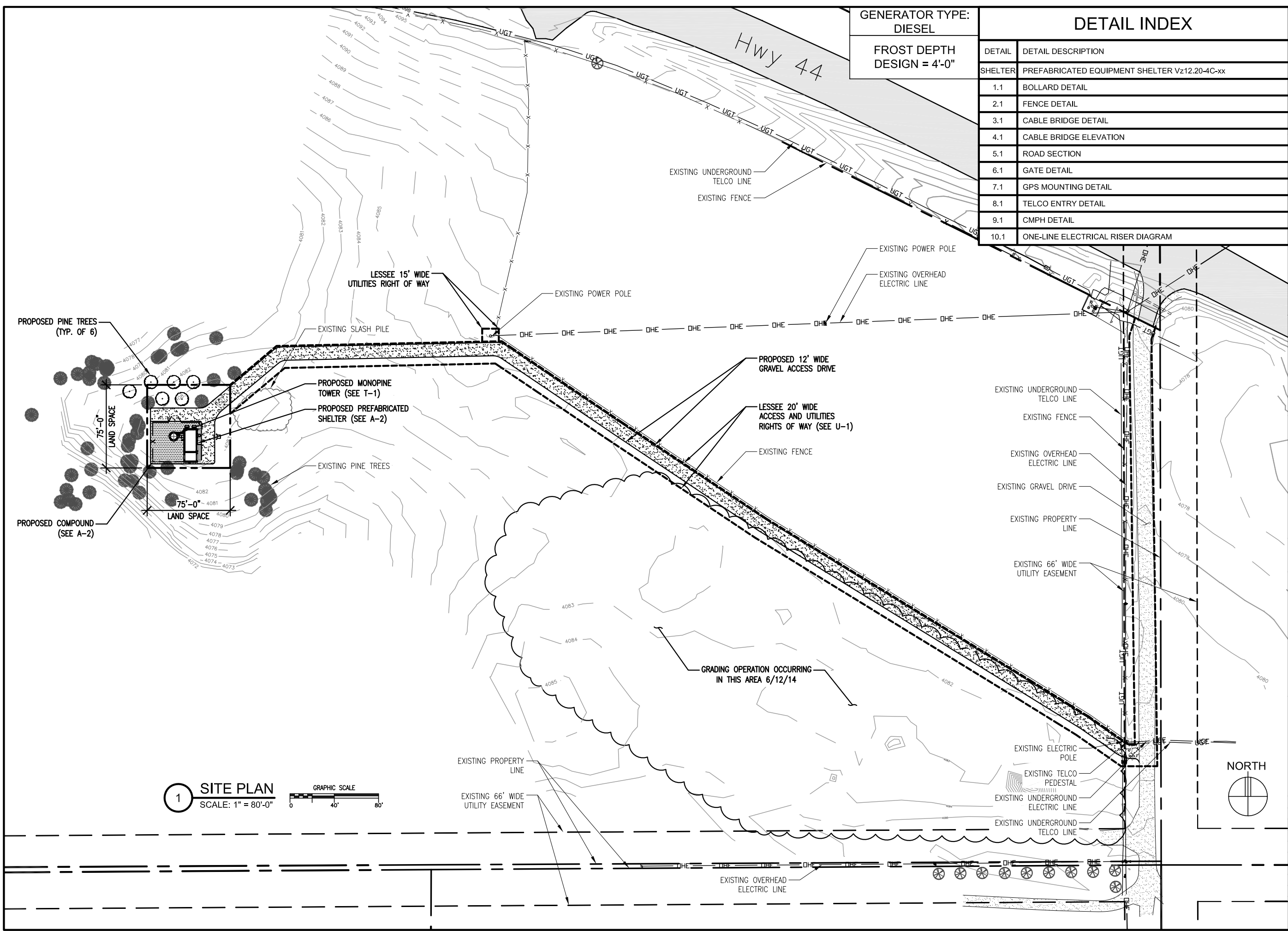
**RCYC
SHANKS GULCH**

WEST HWY 44
RAPID CITY, SD 57702

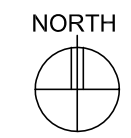
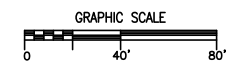
SHEET CONTENTS:
SITE PLAN

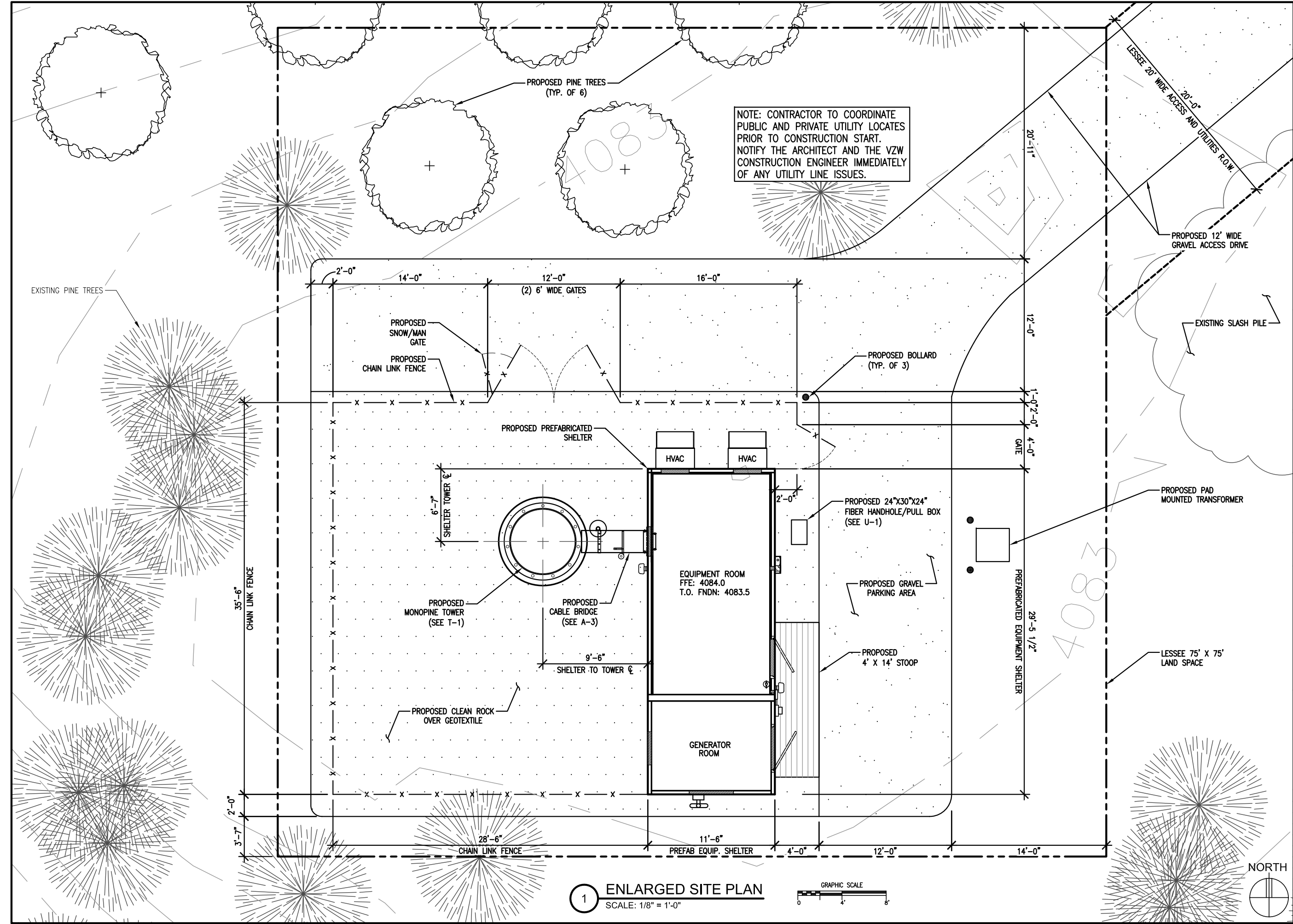
DRAWN BY: EJZ
DATE: 10-27-14
CHECKED BY: CDB
REV. A 10-31-14

A-1



1 SITE PLAN
SCALE: 1" = 80'-0"





NOT FOR CONSTRUCTION

DESIGN 1

ROBERT J DAVIS, AIA
ARCHITECT
9973 VALLEY VIEW RD.
EDEN PRAIRIE, MN 55344
(952) 903-9299

VERIZON WIRELESS

10801 BUSH LAKE ROAD
BLOOMINGTON, MN 55438
(612) 720-0030

PROJECT
2007247434

RCYC
SHANKS GULCH

WEST HWY 44
RAPID CITY, SD 57702

SHEET CONTENTS:
ENLARGED SITE PLAN

DRAWN BY:	EJZ
DATE:	10-27-14
CHECKED BY:	CDB
REV. A	10-31-14

A-2

1 ENLARGED SITE PLAN
SCALE: 1/8" = 1'-0"

GRAPHIC SCALE
0 4 8

